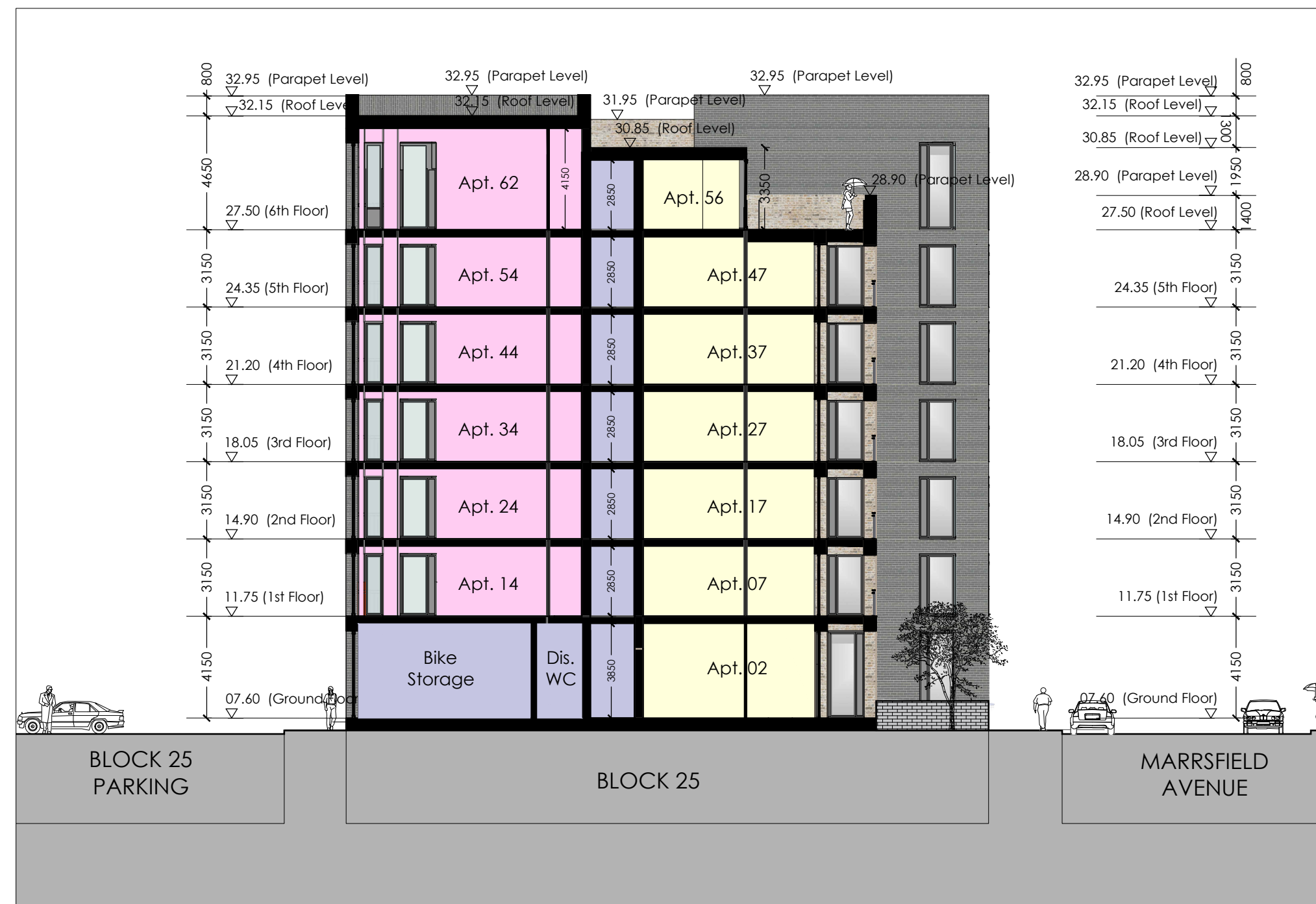


NOTE: - DO NOT SCALE. USE FIGURED DIMENSIONS ONLY  
 - THIS DRAWING IS TO BE READ IN CONJUNCTION WITH ALL RELEVANT SPECIFICATIONS AND DRAWINGS.  
 - ALL DIMENSIONS TO BE CHECKED ON SITE.  
 - IN THE EVENT OF ANY DISCREPANCIES BETWEEN DRAWINGS THE CONTRACTOR IS TO INFORM THE ARCHITECT IMMEDIATELY.

REV.	DATE	DESCRIPTION	DRAWN	CHECKED	APPROVED
A	23.11.2018	CLOUGHRIFIN SHED	CG	PH	PH
P	23.07.2019	ISSUED FOR PLANNING	CG	PH	PH

- ALL DIMENSIONS IN MILLIMETERS
  - WARDROBES SHOWN IN BEDROOM AREAS ARE NOT COUNTED TOWARD TOTAL STORAGE AREAS.
  - FURNITURE AND FITTINGS SHOWN ARE INDICATIVE
- FOR INFORMATION REGARDING LANDSCAPING REFERENCE: ROMAN MCDIARMADA & ASSOCIATES LTD.
- FOR INFORMATION REGARDING ENGINEERING REFERENCE: WATERMAN MOYLAN ENGINEERING CONSULTANTS.
- INDICATES FINISHED FLOOR LEVEL
  - ONE BEDROOM APARTMENTS
  - TWO BEDROOM APARTMENTS
  - ANCILLARY FACILITIES FOR RESIDENTS
  - SITE BOUNDARY
  - WIND SCREEN

- MATERIALS LEGEND**
- Brick type A Finish
  - Brick type B Finish
  - White External Plaster Render
  - Glazed Panel
  - Glazed Sliding Door
  - Insulated metal infill panels
  - Insulated metal panel doors
  - Powder coated metal parapets
  - Powder coated metal railings
  - Powder coated balcony fascia



**SECTION AA**  
Scale 1:200



**KEY PLAN**  
Scale 1:500



**SECTION BB**  
Scale 1:200

BLOCK 25 CLONGRIFFIN DUBLIN 13		BLOCK 25 - SECTIONS	
SCALE 1:200 @ A1	DATE JULY 2019	DRAWN BY CG	DESIGNED BY PH
REVISION No P		DRAWING No 1825 - B25 - 300	